

2020 Back-To-Learning (B2L) Campaign / Process

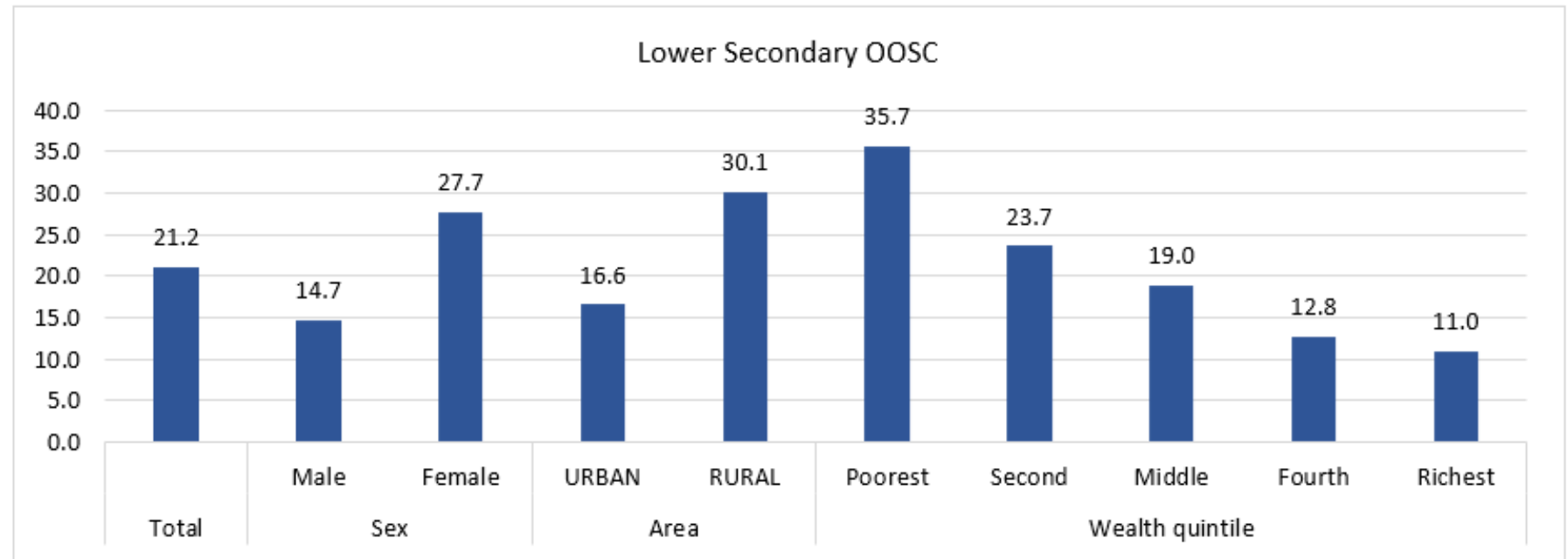
Key Features (or what makes 2020 B2L is different?)

- ✓ Back to Learning (B2L) not Back to School (B2S)
- ✓ Continuity of learning during the school closure or lockdown.
- ✓ Leadership of MoE/GDoEs.
- ✓ Safe school operation during reopening schools.
- ✓ Evidence-Based and Results-Based Approach (monitoring and budgeting).

Data on Out-of-school:

| Out-of-school Percentage of children of: | KRI | | | Iraq (S&C) | | | Iraq (Total) | | |
|---|-----|-------------|------|------------|-------------|------|--------------|-------------|------|
| | M | F | T | M | F | T | M | F | T |
| a) primary school age who are not attending early childhood education, primary or lower secondary school | 3.8 | 3.5 | 3.7 | 7.7 | 10.6 | 9.1 | 7.1 | 9.5 | 8.2 |
| b) lower secondary school age who are not attending primary school, lower or upper secondary school or higher | 7.9 | 15.9 | 14.6 | 15.9 | 29.3 | 22.4 | 14.7 | 27.7 | 21.1 |
| c) upper secondary school age who are not attending primary school, lower or upper secondary school or higher | 26 | 24.8 | 25.5 | 36.6 | 50.8 | 43.4 | 34.7 | 46.1 | 40.1 |

Source: MICS-2018



Objectives of B2L:

1. Continuity of Learning during full or partial school closure.
2. Safe School Operations including disinfecting of schools
3. Enroll Basic/Preparatory school age out-of-school host community children and adolescents in Formal or Non-Formal education with focus on adolescent girls in lower secondary.
4. Enroll out-of-school IDP/Refugee children in Formal or Non-Formal education (3RP/HRP targets).

Stakeholders:

- **Leaders: MoEs/ GDoEs/ DoEs**
- **Parents including PTA/SMC chairs and members**
- **Education Cluster partners:**
- **GDoY, DoY & MoCY**
- **UNICEF: Education, C4D, ADAP, SP, CP & PME.**
- **UN agencies; WFP (SFP), UNESCO, UNHCR,**
- **Ministry of Religious Affairs**
- **Private sector including social media companies.**
- **Education committee within Provincial Councils (if applicable) or Parliament.**

Some terms on OOSC:

- The **target** shall refer to the planned number of out-of-school children or adolescents to be **reached**, **registered** and **enrolled** in Formal or Non-Formal education.
- **Reached**: shall mean out-of-school child reached during the campaign (through awareness campaign fieldworker, etc.).
- **Registered**: shall mean out-of-school child registered for potential enrollment.
- **Enrolled**: shall mean out-of-school children enrolled in formal or non-formal education.

Back-to-Learning Holistic Approach

Targets:

Out-of-school children and adolescents

Out-of-school students

Identify

Identify out-of-school children or adolescents.

Register out-of-school children or adolescents (online).

Schools/teachers to connect with students at home.

Schools/teachers to connect with parents at home.

**Aware/
Sensitize**

Stress on the importance of education and explain the consequences of being out of school.

Inform about the learning opportunities available.

Stress on the importance of education and continuity of learning at home.

Explain the consequences of not learning at home.

Motivate

Learning accelerates reaching your personal goals.

Learning opens up opportunities for employment.

Learning happens both at school and at home.

Learning from home may protect you and your loved ones from COVID-19 pandemic.

Physical or virtual access to education is enabled

Enroll

Support or facilitate enrollment of the out of school child or adolescent.

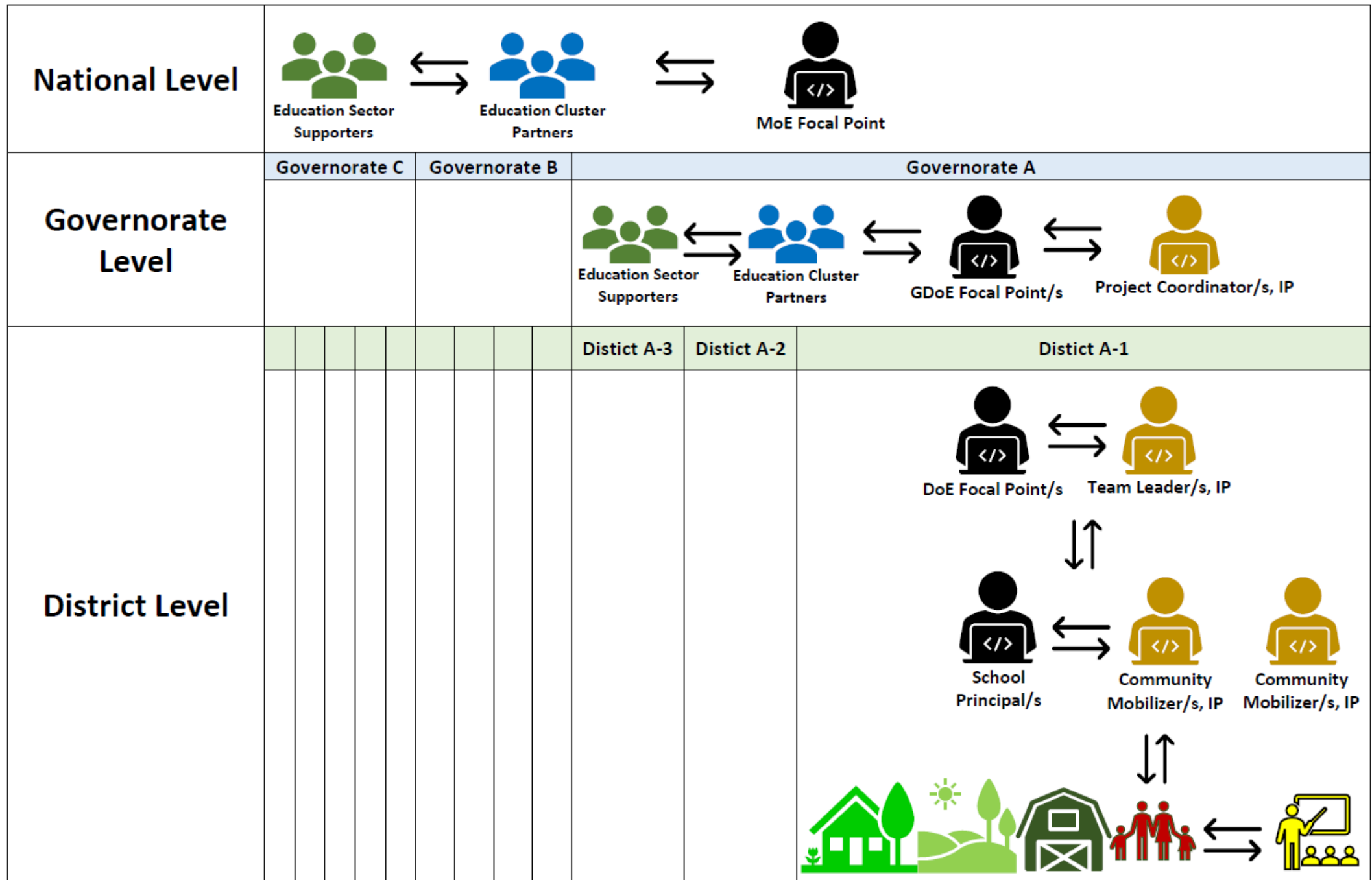
Upload the information to the online system.

Continue Learning

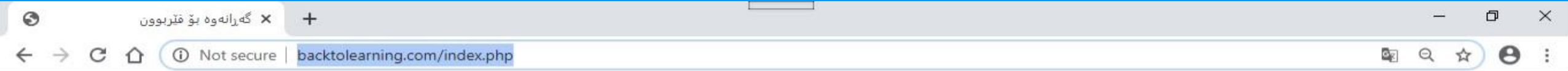
You can still connect with your teachers and classmates while you are at home.

Blended learning helps you to learn better and discover your potentials.

B2L Flowchart



Online system: <https://www.backtolearning.com/index.php>



سەرەتا، يارمەتق، نووسىنى پاپۇرتى رۇۋانە، مىندالى نوي

داوى مىندال | داوى باولك | شولىنى نىشەجى | بىگمىرى

| # | شورين | ژمارەى مىندالى گەپراوہ | بەرە و پىشچوونى رۇۋانە |
|---|---------|------------------------------|------------------------|
| 1 | بەسلاوہ | 234 | |
| 2 | خەبات | 221 | |
| 3 | قوشتەپە | 213 | |
| 4 | دارەتوو | 211 | |
| 5 | بەحرکە | 124 | |
| | سەرچەم | 1003 | |
| | سپراوہ | 102 | |

| ژ | خ | ناوى مىندال | رەگەز | لەدايك بوون | ژ ناسنامە | نىشەجى | تەلەفون | حالات | قوتابخانە | بەريئوہەر | تەلەفون | تېپىنى | d |
|---|---|------------------|-------|-------------|-----------|---------|-------------|---------|-----------------------|------------------|-------------|--------|---|
| 1 | | بېشت اسكندر رحمن | كچ | 2008-08-21 | 00761986 | دارەتوو | 07504308756 | داپراوہ | ئامادەپى دارەتوو پچان | مامۇستا نەستەران | 07504681761 | | d |
| 2 | | ھېلىن لوقمان عمر | كچ | 2001-07-31 | 00449024 | دارەتوو | 07504124421 | داپراوہ | ئامادەپى دارەتوو پچان | مامۇستا نەستەران | 07504681761 | | d |

| Messages/ information | Parents | Primary school age children | Adolescent girls | IDPs | Refugees |
|--|----------------|--|-----------------------------|-------------|-----------------|
| The right to education and the importance of education. | ✓ | ✓ | ✓ | ✓ | ✓ |
| Girls' education vs child marriage. | ✓ | ✓ | ✓ | ✓ | ✓ |
| Continuity of <u>learning</u> during lockdown | ✓ | ✓ | ✓ | ✓ | ✓ |
| Safe school operations. | ✓ | ✓ | ✓ | ✓ | ✓ |
| Parents' participation in school management (SBM) | ✓ | | | ✓ | ✓ |
| Integration policy and Social cohesion | ✓ | | | ✓ | ✓ |
| Basic Information, like: Enrollment dates, places, etc. | ✓ | ✓ | ✓ | ✓ | ✓ |

Budget:

- The budget is **results-based**, meaning that, the planned budget should lead into the planned results (targets).

- If, by any chance, the implementing partner (IP) could not achieve the planned results, the planned budget should not be fully disbursed (i.e. it could be disbursed proportionally).



Discussion

